



atl is a specialist
organisation,
trained,
experienced and
knowledgeable
in the application of
automation
products to
industrial systems

In partnership with



Introducing atl

Automation Technology Ltd was formed in 2001 to draw upon the decades of specialist distribution experience of its founders and provide modern automation technology with traditional high standards of support. Since inception ATL has worked in close partnership with Omron and the achievements of that relationship has been replicated in successful distributorships from Eaton Moeller, Weidmuller, Spelsberg and ETA ensuring ATL has the capability to sell and support a complete range of automation products and solutions.

Since moving into larger premises in 2014 modified to meet its need ATL are now able to have at least £150,000 of stock ready to meet our customer needs.

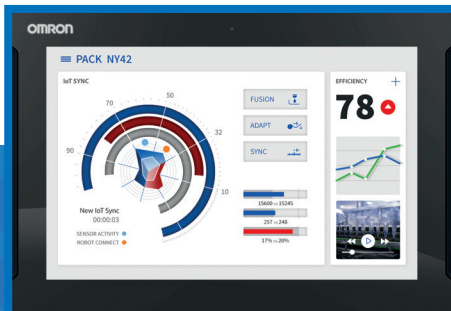
ATL offers additionally a suite of complementary services in association with their partners to provide full engineering solutions. System design, system integration, project management, software engineering, installation and commissioning are all available from ATL. We welcome the opportunity to take full responsibility for a complete project.

ATL also offers a variety of supply solutions including kitting and stock management systems to allow our customers a confidence their manufacturing process will be constantly fed with materials.



In partnership with

OMRON



Omron is one of the world's "big five" industrial automation manufacturers. From their head office in Japan, European headquarters in Amsterdam and UK offices in Milton Keynes, Omron offers first-class automation products and worldwide support.

The Omron range encompasses Factory Automation, Sensors and Safety, Mechatronics, Drives, Industrial Components and Vision Systems in integrated package of products, technologies and support services designed to improve the flexibility and productivity of the manufacturing process.

The Omron Industrial Automation Range

- PLC
- Remote I/O
- HMI
- Motion Controllers
- Servo Systems
- Frequency Inverters
- Photoelectric Sensors
- Inductive Sensors
- Rotary Encoders
- Ident Systems Measurement Sensors
- Vision Sensors & Systems
- Fiber Optic Sensors
- Safety Networks
- Safety Units/Relay Units
- Safety Sensors
- Door and Guard Switches
- Temperature Controllers
- Power Supplies
- Timers Counters
- Programmable Relays Digital
- Panel Indicators
- Electromechanical Relays
- Solid State Relays
- Limit Switches
- Monitoring Products

In partnership with

EATON

Powering Business Worldwide



Eaton Moeller is a world renowned supplier of automation and distribution equipment components.

A global player with a turnover in excess of £700 million, Eaton Moeller employs over 12,000 people in more than 80 countries worldwide. Eaton Moeller has 30 manufacturing plants around the world.

In the UK, Eaton Moeller (formerly Klockner-Moeller) is rightly associated with high quality products, well-engineered solutions and responding to customer needs.

ATL has worked in close partnership with Eaton Moeller to develop the sale and support of Eaton Moeller industrial automation products in the UK, ensuring that all ATL staff are appropriately trained by Eaton Moeller in the selection, application and support of the Moeller series.



In partnership with

Weidmüller 

Weidmüller is the leading provider of solutions for the transmission of power, signals and data in industrial environments.

The company develops, produces and sells electromechanical connection technology, switching cabinet electronics and network infrastructure components.

The Weidmüller Group has a strong international focus with its own manufacturing plants, sales companies and agencies in over 70 countries. The highest demands on quality and service make Weidmüller a competent and flexible partner for its customers throughout the entire world.



In partnership with

els **spelsberg**

Spelsberg are a manufacturer of not only a wide and diverse range of electrical enclosures and accessories, but also have the ability and capability to CNC machine and fully assemble products to a customer's specific requirement.

Spelsberg's reputation is built by the quality of their products and the high levels of service to their customers. Spelsberg els is the UK arm of the successful German company, Gunther Spelsberg GmbH. With over 111 years' experience, Spelsberg GmbH are recognised specialists in the design and manufacture of water and dustproof enclosures.

To provide customers with high levels of service Spelsberg have a base in Telford, Shropshire from where they coordinate their UK operations. From this Midlands base, they have easy access to the road networks for the efficient distribution of their products. Spelsberg are ISO 9001 certified to ensure that they offer the highest levels of quality and service to our customers.



In partnership with



innovative
enclosure solutions
for industrial & electronic
applications

ETA's been developing high quality enclosure solutions for over 30 years and is fast becoming the preferred choice amongst specifiers and installers looking for quality products with innovative features.

ETA provides a very broad range of standard and modified enclosure solutions serving many industries that depend on competitive products delivered on-time.

Trust your enclosure needs with nothing less than ETA.



In partnership with



EMAS have been established since 1969 in Turkey, manufacturing products for the Electro Mechanical industry.

In their UK base in Stafford they hold stock and have technical support for the 18 product groups they manufacture.

Alongside the strong Pushbutton and Limit Switch range they also offer solutions for Heavy Duty Connectivity and Light Towers which includes a single beacon offering 5 colours in the same lens.

EMAS are always looking to engineer new product solutions to customer specification, which has led to a new innovative capacitive pushbutton and they are always happy to take on new challenges to meet its customer's needs.





Tel: 01327 308710

Fax: 01327 312738

Email: sales@automatech.co.uk

www.automatech.co.uk